



Mandl School, The College of Allied Health and
Violence Intervention and Treatment Program

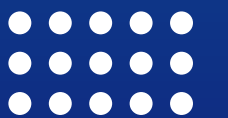
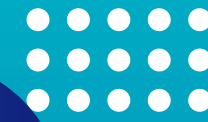
KNOW YOUR RIGHTS

A comprehensive overview of our commitment to student safety. Creating safe spaces, resources available and understanding and preventing violence.

PRESENTED BY

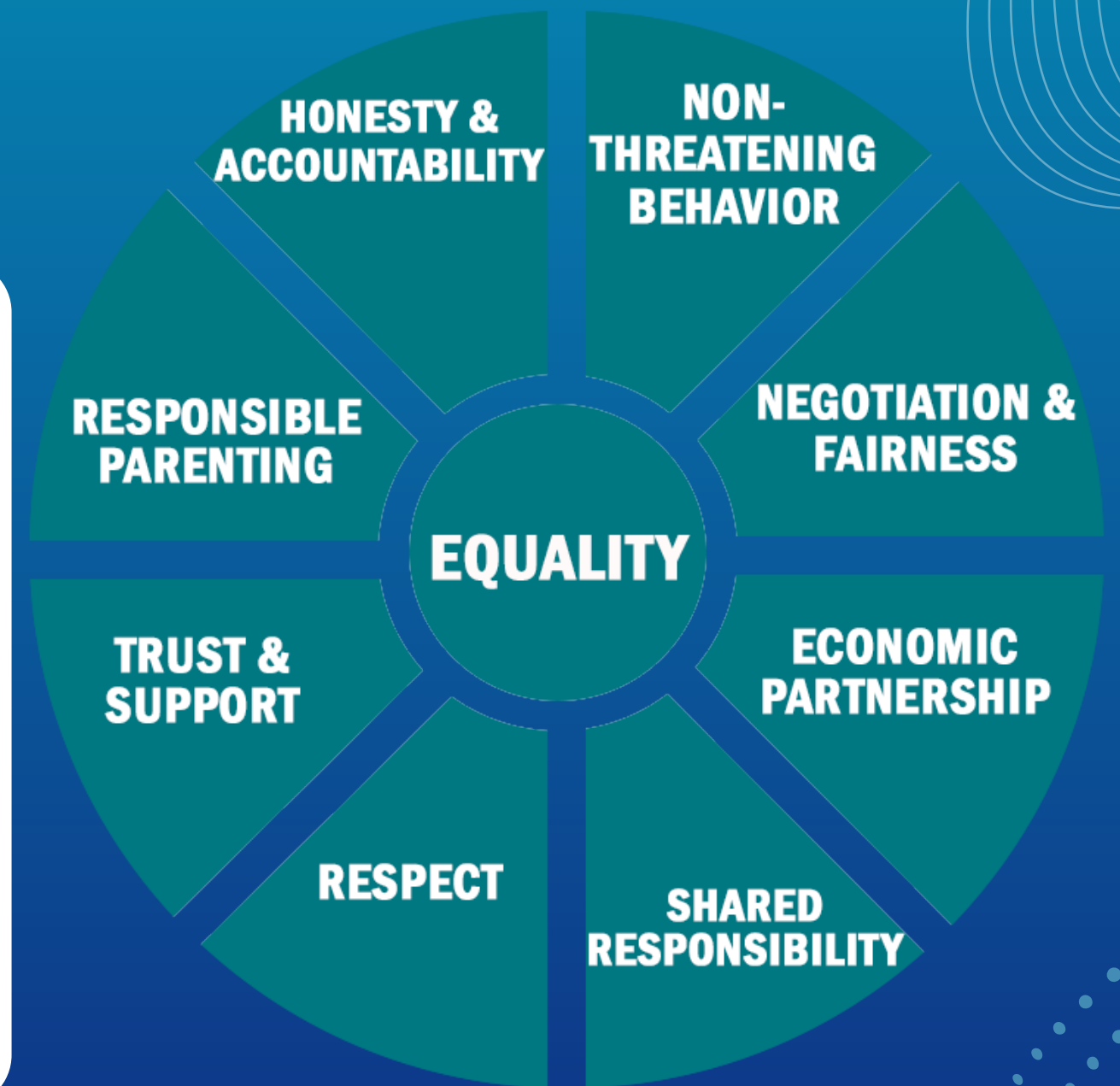
NELSY RODRIGUEZ-

**SENIOR VIOLENCE
PREVENTION SPECIALIST**



INTRODUCTION TO ENOUGH IS ENOUGH

The "Enough is Enough" law (NYS Education Law Article 129-B), enacted in New York in 2015, requires all colleges and universities in the state to implement uniform definitions of prohibited behaviors and prevention/response policies related to sexual assault, domestic violence, dating violence, and stalking, impacting students on and off campus.



TITLE IX

The Education Amendments of 1972, particularly Title IX, prohibits sex-based discrimination in education programs or activities receiving federal financial assistance, ensuring equal opportunities for all students,



WHAT IS A TITLE IX COORDINATOR

Someone that can oversee any complains and offer assistance and services to anyone experiencing harassment discrimination or sexual violence

RESOURCES ARE AVAILABLE

You are not alone!
We can help.

FINDING SAFETY AND SUPPORT THROUGH EIE

The Violence Intervention and Treatment Program is here to help

COMPREHENSIVE SERVICES

VITP can provide a wide array of medical services, including violence intervention and trauma-informed care.

These services include and are not limited to:

SAFE EXAMINERS

We encourage survivors of sexual assault to seek medical attention, once safe please call 911

CRISIS COUNSELING

Treatments to aid recovery is a survivor's right. Advocacy, and support are available.

SUPPORTIVE CARE

Health screenings referrals post assault medication assistance is available at no cost.



SUPPORTING STAFF AND STUDENTS IS IMPERATIVE

Finding safety and support is not always easy but it is possible. The responsibility for abuse is never the victim's fault.



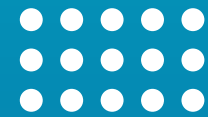
STUDENTS

Abuse victims survivors can experience tend to demonstrate concentration issues, absenteeism, academic disengagement, decrease in grades and higher dropout rates

STAFF/FACULTY SUPPORT

Violence and abuse does not discriminate and affects students, staff and faculty equally. Support is available to all, regardless of role or position help is readily available.

Academic impact of Intimate Partner Violence



✓ Academic Performance

Students who have been exposed to IPV may have difficulty concentrating, which can lead to lower grades and higher dropout rates. They may also have a harder time completing schoolwork and may score lower on measures of verbal, motor, and social skills.

✓ Behavioral changes

Students may exhibit unpredictable behavior, aggression, anger, and hyperactivity. They may also display a lack of interest in social activities, avoid peer relations, and maintain unhealthy relationships.

✓ Emotional changes

Students may experience depression, low self-esteem, guilt, and insecurity. They may also be more likely to transfer patterns of abusive behavior into social networks and romantic relationships.

✓ Physical health

Students may experience injury, eating problems, and stress-related conditions.



YOU MAY BE EXPERIENCING EMOTIONAL OR VERBAL ABUSE IF SOMEONE:

Emotional abuse is also a foundation for other forms of abuse. Often, it is used to erode a person's self-esteem and self-worth and create a psychological dependency on the abusive partner. Let's look at what emotional abuse is and how to know if emotional abuse is present in your relationship.

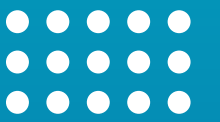
Notice Patterns

Emotional abuse includes non-physical behaviors that are meant to **control**, isolate, or frighten you. This may present in romantic relationships as threats, insults, constant monitoring, excessive jealousy, manipulation, humiliation, intimidation, and dismissiveness, among others.



The behavior aligns with gaining power and control

Emotional abuse is serious, and it is not uncommon for emotional abuse to **escalate** to physical violence. In some relationships, this escalation to physical abuse is slow, and in others, it can happen rapidly.



POWER AND CONTROL WHEEL

Power:

This refers to a person's ability to create and exercise options to change their own life circumstances.

- Power over: This refers to the ability of one person to limit the options or choices of another person.
- Power can manifest in various forms, including physical strength, social status, financial resources, knowledge, and interpersonal skills.

Control:

- Control involves the exertion of authority or dominance over another person's thoughts, actions, or emotions.
- It can manifest as attempts to regulate another person's behavior, restrict their autonomy, or shape their perceptions to serve the controller's interests.
- In abusive relationships, control can be a key tactic used to maintain dominance and restrict the victim's freedom.





A GUIDING LIGHT: SUPPORTING A STUDENT IN TIMES OF ABUSE

Keep confidentiality as much as possible.

Sometimes the best help you can provide is to say, “I believe you,” or “I am here for you,” or “It’s not your fault.” Refrain from judgement and be supportive of your student.

If they are experiencing Suicide Ideation or threaten to harm themselves or others- Call 911

If Children are present during an abusive episode- Contact ACS:

You may say, something like

‘We prioritize your safety first and because children were present ACS has to be notified by all mandated reporters to ensure you are all safe at home.’



WHAT IS SEXUAL MISCONDUCT?

Mandl's sexual misconduct policy prohibits sexual harassment, gender-based harassment and sexual violence.

✓ Sexual harassment is unwelcome conduct of a sexual nature

✓ Gender-based harassment is unwelcome conduct of sexual nature

✓ Harassment based on an individual's actual or perceived sex is prohibited

✓ Sexual violence is an umbrella term that includes, sexual assault, dating/domestic violence. Stalking or intimate partner violence

✓ Conduct is unwelcomed if the individual does not invite it and considers the conduct to be undesirable or offensive

✓ Under Mandl's policy, affirmative consent is an informed voluntary and mutual decision to engage in agreed upon sexual activity



BE MINDFUL

REMEMBER	FACTS
Who is affected?	Anyone of any age, including older adults, can be affected by violence and abuse
Types of abuse	Abuse can happen in all relationships, it can include Physical, sexual, emotional, economic, stalking and verbal abuse
How it can happen?	Violence and abuse can happen in many types of relationships including marriages, dating and friendships at any point during the relationship or even after it has ended.

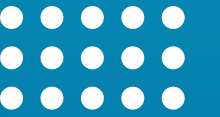
BE MINDFUL

REMEMBER	FACTS
Severity	Violence and abuse can range from one episode of violence, to chronic and severe episodes over multiple years. Some forms of abuse never become physical. Multiple types of abuse can be present at once.
Mental Health	Abuse can have adverse mental health consequences, however the mental health of the survivors are often unmet. Not all persons involved in abusive relationships realize their relationship is abusive.
Power and Control	In an abusive context, both terms are used to describe tactics used by one person to dominate or manipulate another, often resulting in a significant imbalance of power and a lack of autonomy for the victim.

WHAT TO DO IF YOU ARE VICTIM OF SEXUAL VIOLENCE

Get to a safe place: For example, call someone you trust, go to the nearest hospital or police station.

- ✓ Call 911 if it is safe to do so, ask to be taken to a hospital
- ✓ Preserve physical evidence. if possible do not shower or change clothing
- ✓ Talk to someone you trust and seek counseling, VITP can help
- ✓ You have 20 years to report to the police
- ✓ Evidence can be collected up to 120 hours post assault



MANDL SCHOOL'S STUDENTS SEXUAL MISCONDUCT COMPLAINANT'S BILL OF RIGHTS

- Make a report to local law enforcement and/or state police
- Have disclosures of domestic violence, dating violence, stalking, and sexual assault treated seriously.
- Make decision about whether or not to disclose a crime or violation and participate in the conduct process free from pressure by the institution;
- Participate in a process that is fair, impartial and provides adequate notice and a meaningful opportunity to be heard.
- Be treated with dignity and to receive from the institution courteous, fair and respectful health care and counseling services, where available.



KNOW
YOUR
RIGHTS

MANDL SCHOOL'S STUDENTS SEXUAL MISCONDUCT COMPLAINANT'S BILL OF RIGHTS

- Be free from any suggestion the reporting individual is at fault when these crimes and violations are committed, or should have acted in a different manner to avoid such crimes or violations.
- Describe the incident to as few institution representatives as practicable and not be required to unnecessarily repeat a description of the incident;
- Be protected from retaliation by the institution ,any student, the accused and/or the respondent, and/or their friends, family and acquaintances within the jurisdiction of the institution;



KNOW
YOUR
RIGHTS

MANDL SCHOOL'S STUDENTS SEXUAL MISCONDUCT COMPLAINANT'S BILL OF RIGHTS

- Access to at least one level of appeal of a determination
- Be accompanied by an advisor of choice, in accordance with appropriate regulations, who may assist and advise a reporting individual, accused, or respondent throughout the judicial or conduct process including during all meetings and hearings related to such process;
- Exercise civil rights and practice of religion without interference by the investigative, criminal justice or judicial or conduct process of the institution.

QUESTIONS ABOUT MANDL'S SEXUAL MISCONDUCT POLICY AND PROCEDURES MAY BE DIRECTED TO YOUR CAMPUS TITLE IX COORDINATOR



**KNOW
YOUR
RIGHTS**

HOW DOES TITLE IX HELP STUDENT VICTIMS

If you are a victim of sexual violence, the college has a team ready to help you. This team includes trained members of student affairs and the Title IX Coordinator. This team provides information about your rights, notifies you about resources, and offers reasonable interim measures, such as change in schedule, a no contact order and other actions.



COMPREHENSIVE SERVICES ARE AVAILABLE.

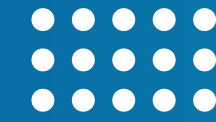
VITP offers trauma-informed care and counselling to students free of cost for more information on School Policy:

<https://mandl.edu/academic/title-ix-vawa>

IF YOU EXPERIENCE, OBSERVE AN INCIDENT

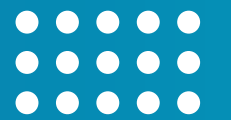
Do not hesitate to report it to the Title IX Coordinator, this person oversees the complaint process, answers questions and offers assistance as well as services to anyone experiencing harassment, discrimination violence and/or sexual and domestic abuse

COUNSELING, SAFETY PLANNING SERVICES ARE AVAILABLE



For one-on-one counseling contact
Wyckoff Heights Medical Center-VITP Program
Office:(718)963-7788
Email: vitp@wychoffhospital.org
Nelsy Rodriguez-EiE Liaison, Senior Violence Prevention Specialist

- ✓ The Title IX office is located on the 5th Floor
- ✓ Dr. Orsete Dias-VP of Academic Affairs EXT. 130
- ✓ Ms.Ana Tejada Dean Academics and Student Services
EXT.136
- ✓ Professor Sandra Monteiro Assistant Dean, Student Services
EXT 135





Who we are

The Violence Intervention & Treatment Program (VITP) at Wyckoff Heights Medical Center is a leading advocate for sexual assault and domestic violence survivors in the community.

Those who come to Wyckoff's VITP often arrive in crisis, but leave with a new sense of hope and renewal. We provide free, confidential, trauma-informed services.

Services include

(but not limited to):

Safe Examinations
Information
Advocacy
Treatment
Crisis Counseling
Safety Planning
Resources & Referrals
OVS Application Assistance

(for compensation of expenses related to the assault/crime)

No person in the United States shall, on the basis of actual or perceived race, color, religion, national origin, sex, gender identity (as defined in paragraph 249(c)(4) of title 18), sexual orientation, or disability, be excluded from participation in, be denied the benefits of, or be subjected to discrimination under any program or activity funded in whole or in part with funds made available under the Violence Against Women Act of 1994.

Other Resources

If you are in danger, please call 911

Wyckoff Heights Medical Center VITP
(for counseling & referrals)
718.963.7788



Safe Horizon
Sexual Assault: 212.227.3000
Domestic Violence: 800.621.HOPE
Crime Victims Assistance: 866.689.HELP

Adult Protective Services (for elder abuse)
Central Intake: 212.630.1853

Barrier Free Living
(physical, mental, and cognitive disabilities)
718.250.2121

New York City Anti-Violence Project
(LGBTQIA+ services)
212.714.1141

Brooklyn Family Justice Center
718.250.5111

Queens Family Justice Center
718.575.4545

Brooklyn DA Victim Services Unit
718.250.3112

Queens DA Victim Advocate Program
718.286.6847

HELP R.O.A.D.S
718.922.7980

Center Against Domestic Violence
718.254.9134

New York State Office of Victims Services (OVS)
800.247.8035

Local Police Precincts
83rd: 718.574.1605
104th: 718.386.3004



VITP



Violence Intervention & Treatment Program

374 Stockholm Street
Brooklyn, NY 11237
718.963.7788

VITP@wyckoffhospital.org

 @VITPWyckoff

You don't have to go through this alone!



Agresión Sexual

Si usted se encuentra en peligro, por favor llame al 911.

Alentamos a los sobrevivientes a buscar atención médica. La agresión sexual puede resultar en lesiones corporales, embarazo y/o enfermedades de transmisión sexual.

El Centro Medico de Wyckoff Heights está disponible para ayudarle si usted o alguien que conoce es una víctima de asalto sexual.

1. Se le pedirá su consentimiento para un examen forense (kit de violación).
2. El examen debe de realizarse dentro de 120 horas después de asalto.
3. El examen es gratuito a través de los Servicios para Víctimas de la Oficina del Estado de Nueva York (www.ovs.ny.gov).
4. Incluso si no desea presentar un reporte policial de inmediato, guardaremos el kit durante 20 años, en caso de que en un futuro elija presentar un reporte policial.

Usted puede continuar sintiéndose
Avergonzado
Enojado
Culpable
Temeroso/ ansioso
Deprimido
Recuerda, no es tu culpa.

Si desea hablar con un consejero, el personal del Programa de VITP puede ayudarle con el asesoramiento y otros servicios.



Violencia Domestica

La violencia domestica es un patrón repetitivo de comportamientos para mantener el poder y el control sobre una pareja intima.

Estos comportamientos dañan físicamente, despiertan miedo e impiden que una pareja haga lo que desea y obliga a comportarse de maneras que no desea.

Simplemente,
¡Violencia Domestica es ABUSO!

Este abuso puede incluir el uso de violencia física y sexual, amenazas e intimidación, abuso emocional y privación económica.

La violencia domestica no se ve igual en todas las relaciones porque cada relación es diferente. Sin embargo, una cosa que la mayoría de las relaciones abusivas tienen en común es que la pareja abusiva hace muchas cosas para mantener el poder y el control sobre sus parejas.

Se encuentra ayuda para aquellos que necesita.



Mandl & VITP



THANK YOU



718-963-7788



@vitpwyckoff



Nelsy Rodriguez
NRodriguez@Wyckoffhospital.org



Wyckoff Heights Medical Center

